



**Western Noise Control**  
Engineered Acoustic Solutions

## PET ACOUSTIC FELT BOARD

# ECHOFELT<sub>re</sub>

**ECHOFELT ACOUSTIC PET FELT BOARD PANELS** are 100% polyester acoustic boards. These panels are fiberglass free and VOC free and have a recycled content of at least 60%. The versatility of this product allows it to be used in a variety of ways, including wall panels, baffles and clouds. Western Noise Control focuses on custom applications, please reach out regarding specific project ideas.

## ADVANTAGES

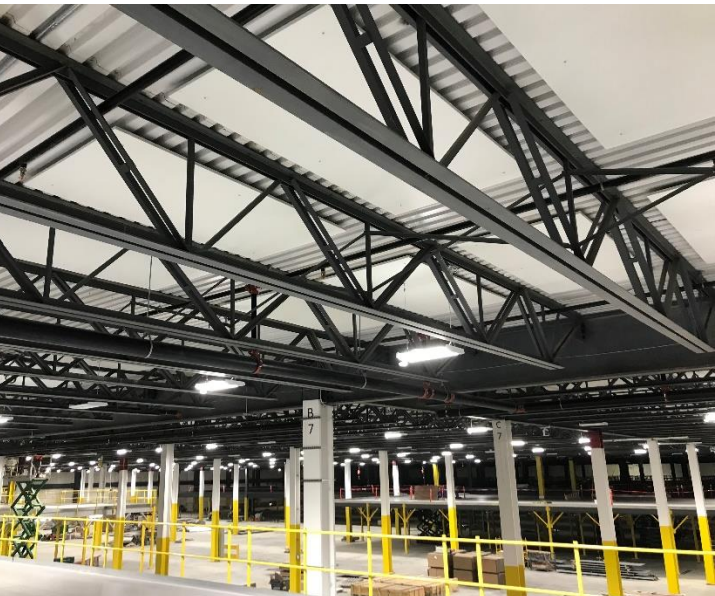
- Lightweight
- Easy to Handle/Cut/Mount
- Durable

## APPLICATIONS

- Acoustic Panels
- Acoustic Baffles
- Acoustic Art
- Acoustic Ceiling Tiles
- Acoustic Clouds
- Acoustic Desk/Privacy Screens

**Acoustical Performance of Echofelt Acoustic PET Boards**  
Sound Absorption Coefficients

Product	Thickness Imperial	Thickness Metric	Density	Panel Size	NRC A-Mount	Class A E84
ECHOFELT: 25mm	1"	25mm	6lb	4'x8'	0.75	<input checked="" type="checkbox"/>



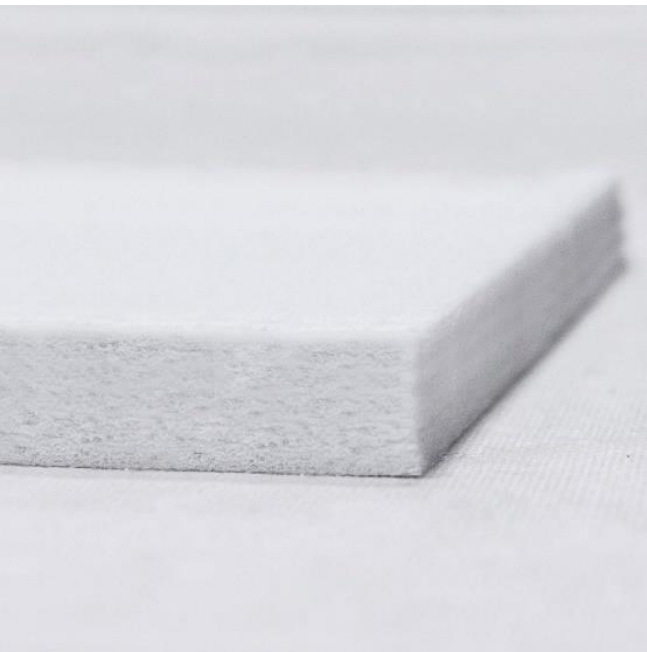
**Western Noise Control Corporate Office:** 2510 84Ave. Edmonton, AB T6P 1K3

T: 780-423-2119 | TF: 800-661-7241 | E: [info@acousticsolutions.com](mailto:info@acousticsolutions.com) | W: [www.acousticsolutions.com](http://www.acousticsolutions.com)

# APPLICATIONS

The flexibility of our ECHOFELT ACOUSTIC PET FELT BOARDS allows them to be used in most interior areas requiring sound quality improvement and reverberation reduction.

The panels may be installed in a variety of configurations, sizes, shapes and colours.



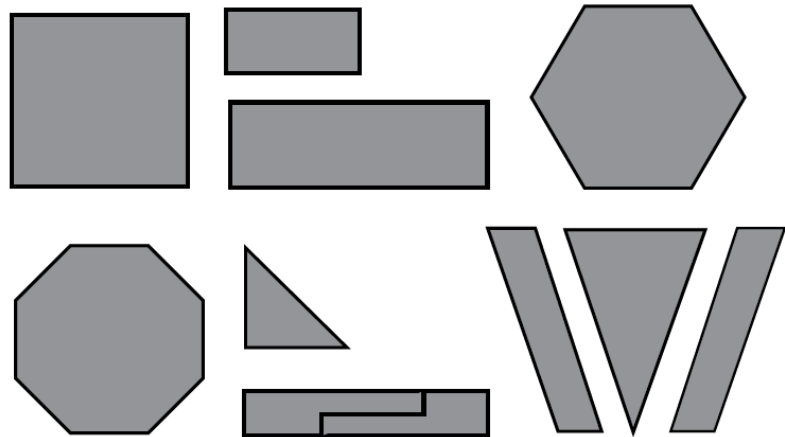
# PET ACOUSTIC FELT BOARD

# ECHOFELT

## SIZES and SHAPES

Standard panels include any shape withing a 4'x8' grid including triangles, hexagons and octagons.

Custom Sizing and Shapes may be available. Please contact us to discuss your specific project requirements.



## SPECIFICATIONS

FLAMMABILITY:

ASTM E-84: Class 1 or A

COLOUR:

White or Black

## ACOUSTICAL PERFORMANCE

Sound Absorption Coefficients

PANEL THICKNESS			FREQUENCY						
Imperial	Metric	Density	125Hz	250Hz	500Hz	1000Hz	2000Hz	4000Hz	NRC
½"	13mm	9.4 pcf	0.00	0.05	0.32	0.70	0.93	1.01	0.50
1"	25mm	6.0 pcf	0.09	0.23	0.69	1.01	1.09	1.06	0.75
2"	50mm	6.0 pcf	0.14	0.69	0.95	1.02	0.97	0.98	0.90

Note: Average NRC is based on the 250, 500, 1000 and 2000Hz frequency bands and rounded to the nearest multiple of 0.05.